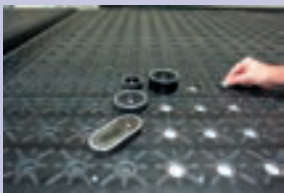
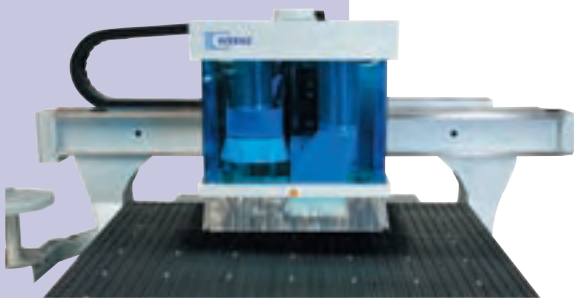
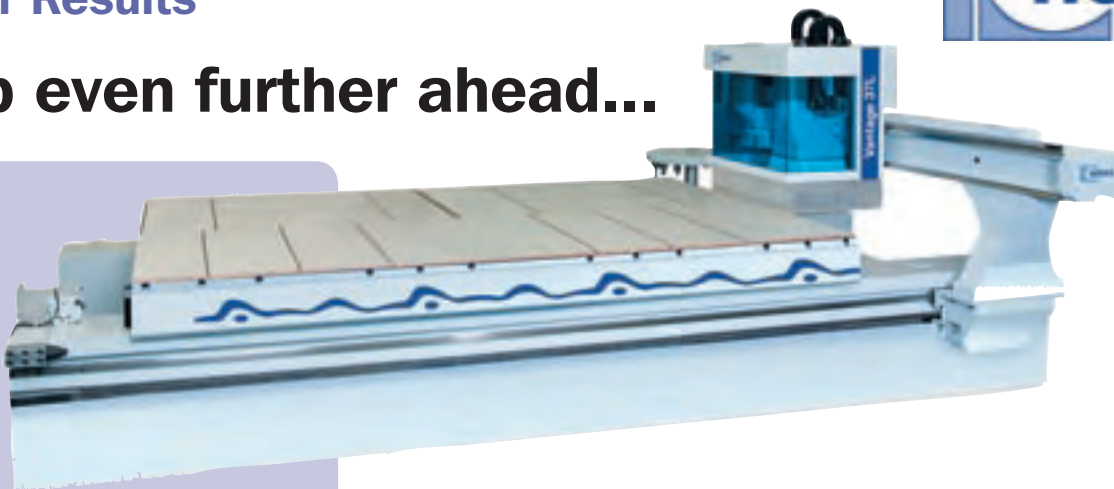


**Better Technology
Better Results**



Step even further ahead...



Fast and versatile

Just as the 'pocket rocket' sets the standard in compact machines so does Weeke's new Vantage 37L for big machines. This is a seriously fast and capable nesting solution combined with the best productivity and sheet utilisation when using 3600 by 1800mm sheets. Smaller sheet sizes are just as easy - because the vacuum is zoned to suit all common sheet sizes instantly.

Traverse speeds to 105m/min combine with separate drill and router Z axis for the quickest results. Versatile 'C' axis and 14 tools work alongside Weeke's' unique 'Otrix' table / cup system (no rubber seal strip required!) for versatility that's unmatched on any other 'flat bed'. Better software makes things

faster and easier for you and every things done in complete safety thanks to full fence guarding, safety pressure zone mats and Weeke's unique auto loading and unloading of the tool change.

The list goes on - quite frankly you will be amazed. But typically 'German' everything has a purpose and a benefit for you.

Full auto load, labelling and unload options are also available to completely automate the nesting process - and really drive the labour costs and hassles out of your production.



Talk to Homag

Phone 1800 355 635
sales@homag.com.au
www.homag.com.au