

woodNest professional Software for shaped component nesting

The nesting technique is used to collate order-specific production batches with optimized cutting waste. Classical fields of application include not only boat and frame building (upholstered furniture), caravan and toy construction, but also just-in-time production of furniture components, kitchen and bathroom furniture.

Cutting waste and processing optimization in one

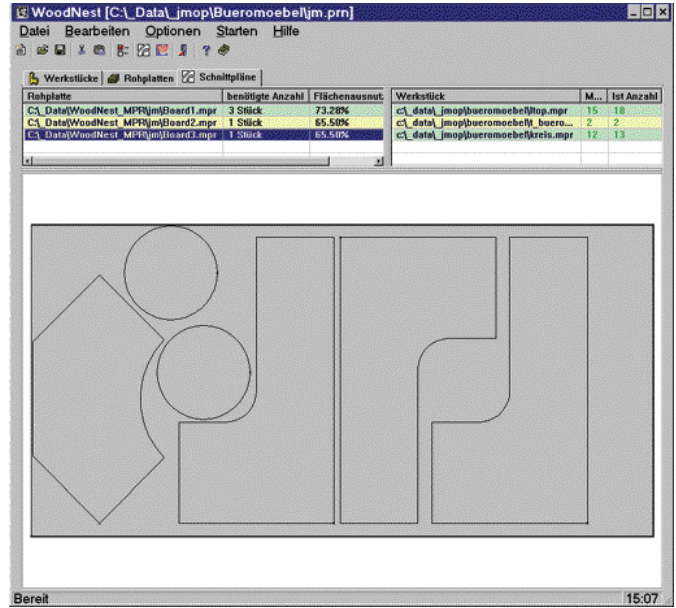
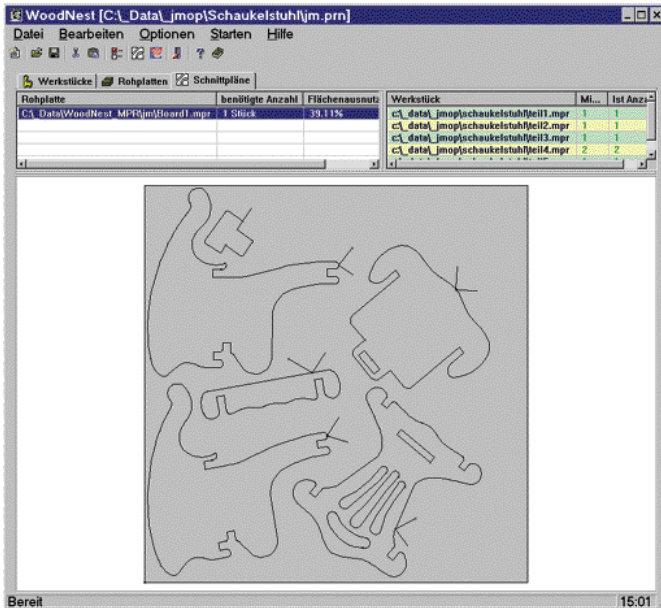
woodNest is also capable of directly processing woodWOP programs. The woodNest result: Finished woodWOP programs including the whole range of required processing steps.

The benefits of woodNest:

- Comprehensive production from CAD / ERP to the finished workpiece
- Material optimization, resulting in reduced cost
- Just-in-time production
- Optimum flexibility
- Grouping of different production steps



woodNest professional



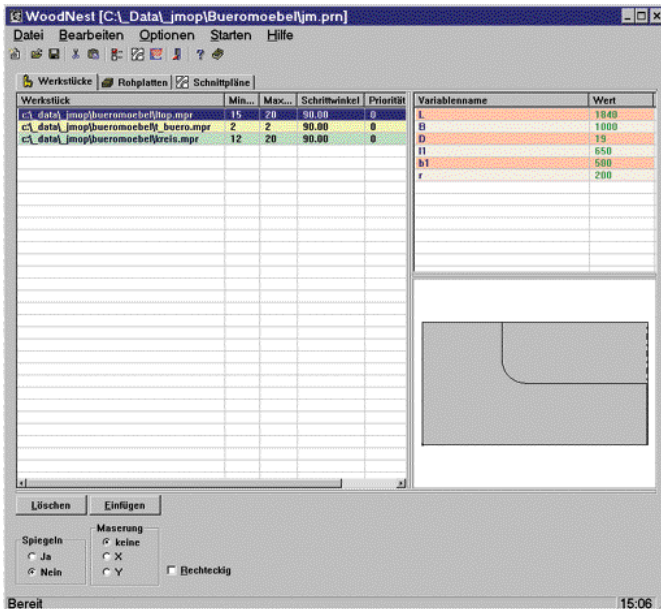
www.ungerdigital.de 02 03

Inward and outward traversing routines

The inward and outward traversing routines required for trimming are read from the woodWOP program by woodNest and taken into account in the nesting calculation.

Nesting result

After completion of the nesting calculation, a new table appears in which the preferred and actual number of all nested parts are displayed next to the surface area diagram. The user can now decide whether a further nesting calculation needs to be performed with new parameters (initiation, rotary angle etc.).



Variable parts lists

The subject of variant technology is of major significance for furniture and wood component manufacturers. Standardized components in different dimensions can be defined in a variable parts list. Using a defined interface, the variable parts lists can also be adopted by a higher-level ERP system.

Consideration of wood grain

woodNest is capable of assigning a grain direction to workpieces and raw panels, and where required of taking a specified wood grain direction into account in the nesting calculation.

System requirements

- PC with WIN98, ME, NT4, 2000 or XP
- Minimum screen resolution 800 x 600 pixel
- 50 MB free hard disc space
- Mind. 128 MB RAM



Weeke Bohrsysteme GmbH

Benzstr. 10 - 16
33442 HERZEBROCK-CLARHOLZ
GERMANY
Phone +49 5245 445-0
Fax +49 5245 445-139
E-Mail info@weeke.de
Internet www.weeke.com